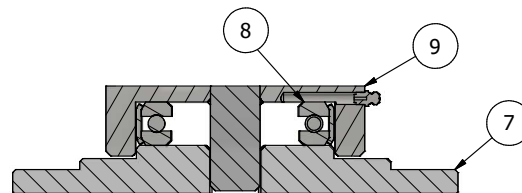
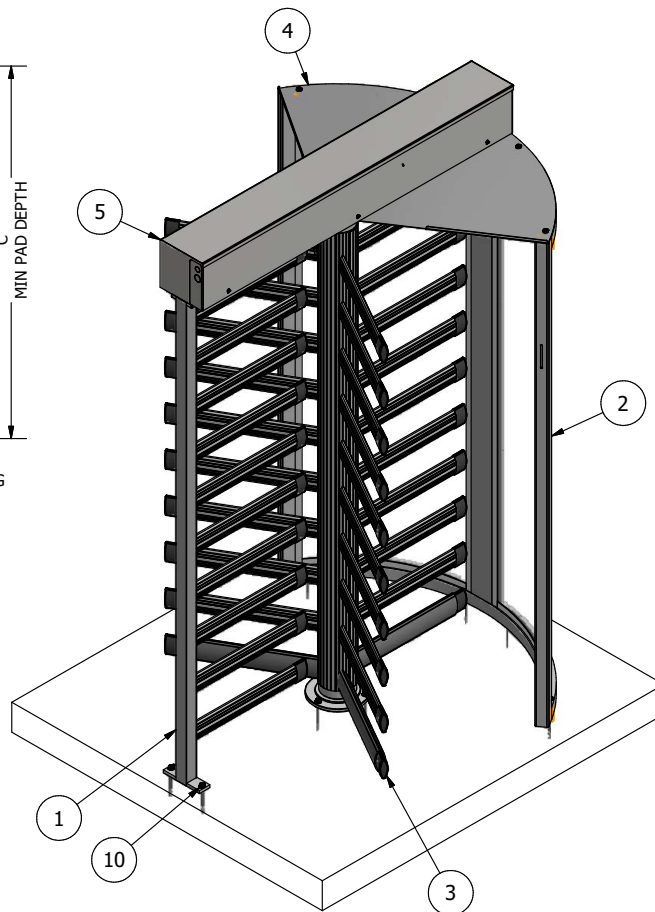
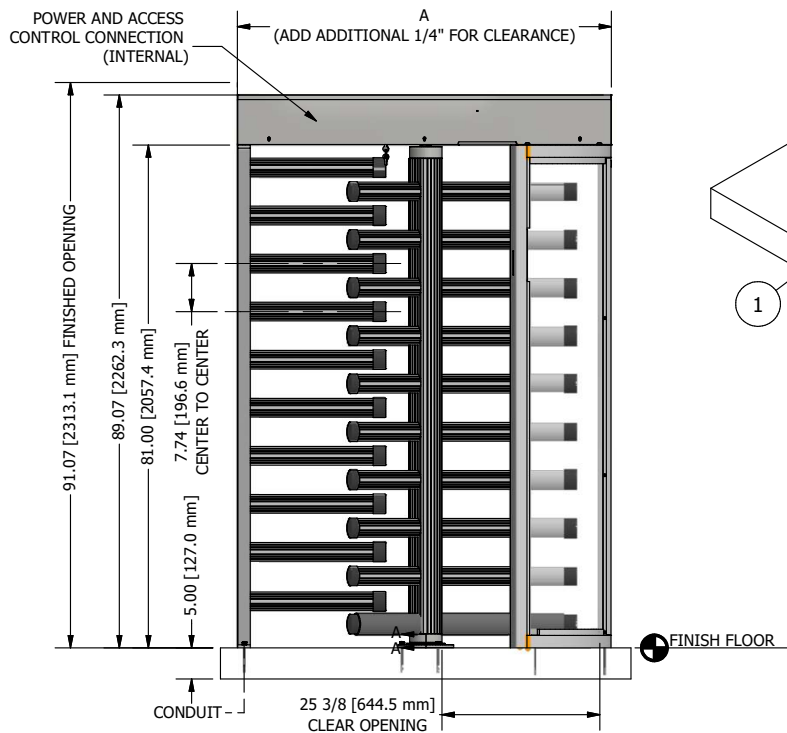
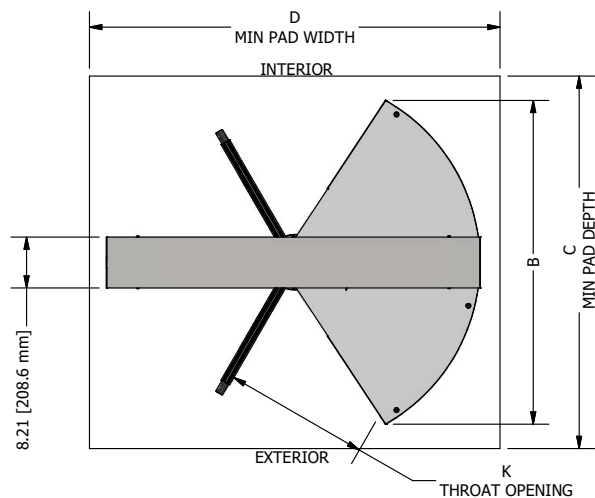


6 5 4 3 2 1



SECTION A-A
BOTTOM BEARING/BASE PLATE
SCALE 1:2.5

GENERAL NOTES:

TURNLOCK-150ASTG = 1 DIRECTION ELECTRICALLY CONTROLLED.
TURNLOCK-150ASTG2 = 2 DIRECTIONS ELECTRICALLY CONTROLLED.
TURNLOCK-150MASTG = MECHANICAL UNIT.

ANODIZED ALUMINIUM CONSTRUCTION.

MINIMUM PAD SIZE SHOWN. MUST BE LEVEL WITHIN 1/4".

BRACE BARRIER POST AT TOP TO ADJACENT SURFACE.

ALLOW 2" [50.8MM] FOR REMOVAL OF 2 PC COVER.

ELECTRICAL NOTES:

POWER SERVICE OPTIONS:

1. 24 VDC
2. 110 VAC SINGLE PHASE
3. 220 VAC SINGLE PHASE 50/60HZ
4. 220 VAC DUAL PHASE 50/60HZ

15A MAINS SERVICE REQ'D

4 LOCATIONS AVAILABLE FOR CONDUIT ACCESS.

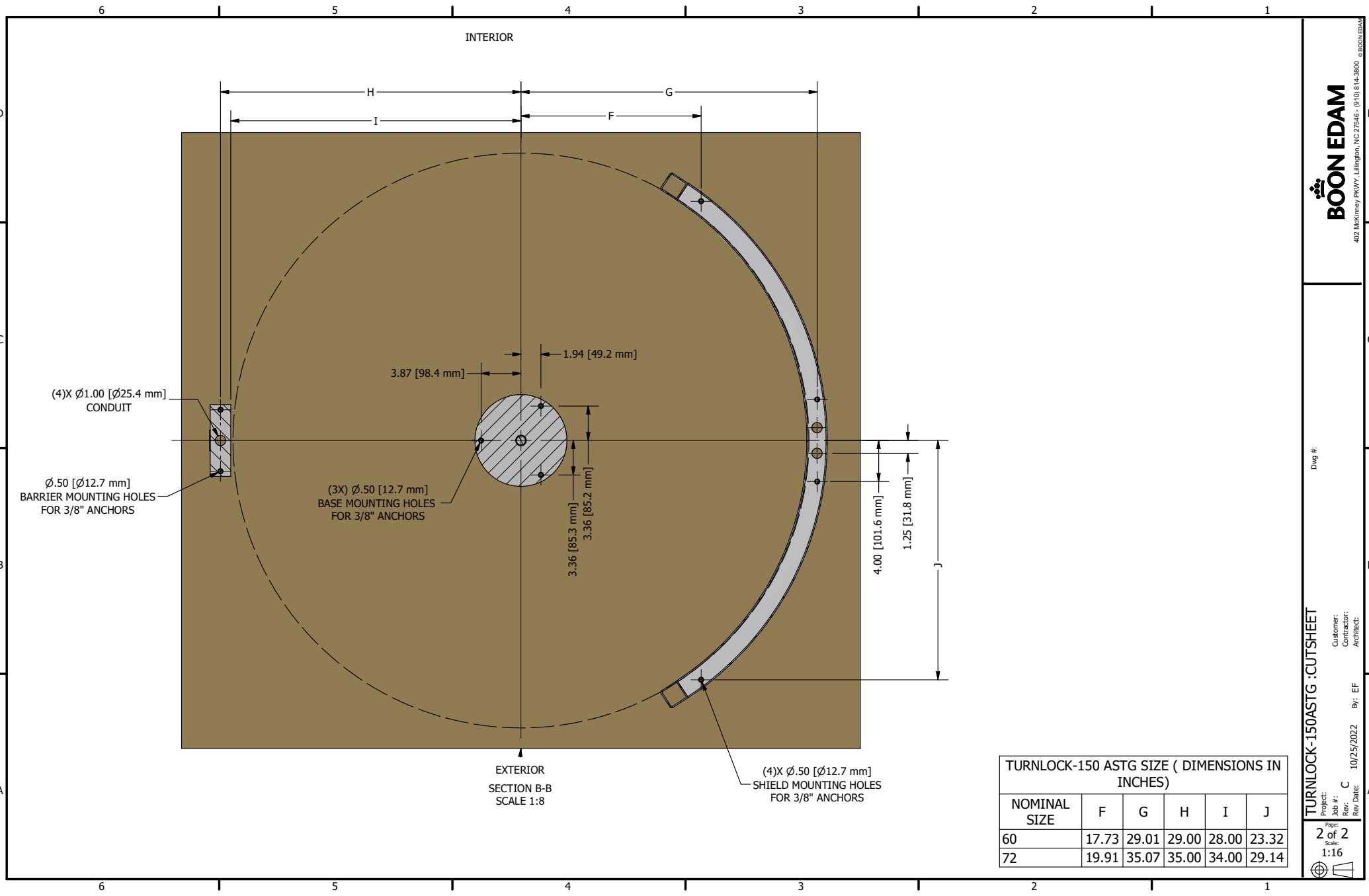
AUTHORIZATION, FIRE ALARM REQUIRES DRY CONTACT FROM ACCESS CONTROL.

CODED NOTES:

1. BARRIER ASSEMBLY, WELDED - ANODIZED ALUMINIUM
2. SHIELD ASSEMBLY, WELDED - ANODIZED ALUMINIUM WITH LEXAN PANELS
3. ROTOR ASSEMBLY, WELDED (3) - ANODIZED ALUMINIUM
4. CEILING PLATE - ANODIZED ALUMINIUM
5. MECHANISM CHANNEL - ALUMINIUM
6. 2 PC CHANNEL COVER - STAINLESS STEEL
7. BASE PLATE - ANODIZED ALUMINIUM
8. BOTTOM BEARING
9. BOTTOM FLANGE
10. ANCHOR BOLTS (9), PROVIDED

TURNLOCK-150ASTG SIZE (DIMENSIONS IN INCHES)						
NOMINAL SIZE	A	B	C	D	E	K
60	60.13	52.15	60.00	66.00	25.50	23.67
72	72.18	63.73	72.00	78.00	31.50	28.34

* NOTE: TOP CHANNEL WIDTH IS 18.21 @ 72,88 NOMINAL SIZE



TURNLOCK-150 ASTG SIZE (DIMENSIONS IN INCHES)					
NOMINAL SIZE	F	G	H	I	J
60	17.73	29.01	29.00	28.00	23.32
72	19.91	35.07	35.00	34.00	29.14

Project: TURNLOCK-150ASTG : CUTSHEET

Page: 2 of 2

Scale: 1:16

Job #:

Rev: C

Rev Date: 10/25/2022

Customer:

Contractor:

By: EF

Architect:

BOON EDAM

402 McKinney PKWY, Lillington, NC 27546 - (910) 814-3800

Dwg #: